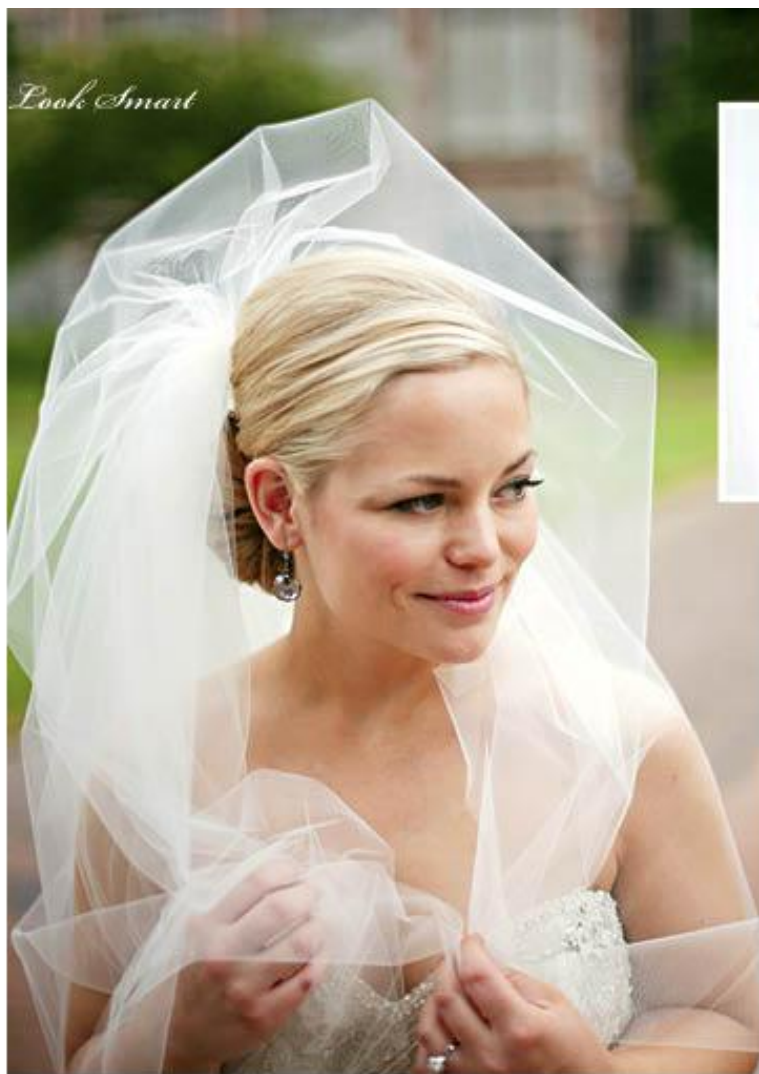


Look Smart



The Kathy Evans Beauty team met the bride at her Arctic Club bridal suite at 7 a.m.; she was ready for her "first look" photos at 11. The ceremony was at 2:30, dinner was served at 6:15, and dancing in the Dome Room lasted until 11:30. Talk with your hair and makeup crew about products and styles that will hold up all day—and night.

Instant Classic

This real bride's look was as grand and regal as her venues

HOW DOES ONE COMPETE with the awe-inspiring aisle inside Blessed Sacrament Church and the stately ceiling in the Arctic Club's Dome Room? Kayla Shaw, a Sammamish-based graphic designer who married real estate developer David Avenell Jr. in July 2011, knew her dress would have to hold its own amid the distinctive architectural elements of her ceremony and reception venues. When she found a two-tone Lazaro stunner at Marcela's La Boutique, she felt she could be at one with her surroundings. The challenge was then to achieve a hair and makeup look that was fittingly glamorous but also grounded and somewhat understated.

Kathy Evans of Kathy Evans Beauty Studio (see resource guide for contact information) used a neutral color palette, natural coverage, and soft, light highlights around Shaw's eyes and cheeks to ensure that the bride was "an elevated version of herself." Stylist Johana Storz (now at Claire de Lune Design Studio) worked with Shaw's natural part and used a clip-in hair extension to create a graceful but bold side chignon at the nape of her neck.



★
ALL ABOUT EYES

Lavender and shimmering pinks create a softly smoky eye.

Get the Look

MAKEUP Evans prepared Shaw's skin with an oil-free moisturizer, Smashbox foundation primer, and Mac's Strobe Cream, which boosts skin with vitamins, green tea, and iridescent particles. Long-lasting airbrush foundation and sculpting powder followed; Mac's "Pink Swoon" blush on the apples of Shaw's cheeks made her look as if she were lit from within.

Lavender, mauve, and shimmering pinks allowed for a softly smoky eye; crème eyeliner and short- and medium-length individual eye-lashes yielded a natural but well-defined look. Mac's "Soar" lip pencil and "Cultured" gloss completed the soft, lustrous palette.

HAIR Storz started with clean, sleek, shiny hair and brushed it into a low ponytail. She back-combed the upper portion to add some height and drama, and pinned and twisted the ends around the ponytail to create a modern coil. ■